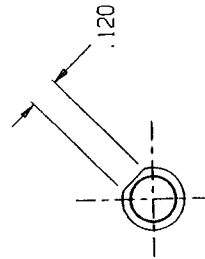
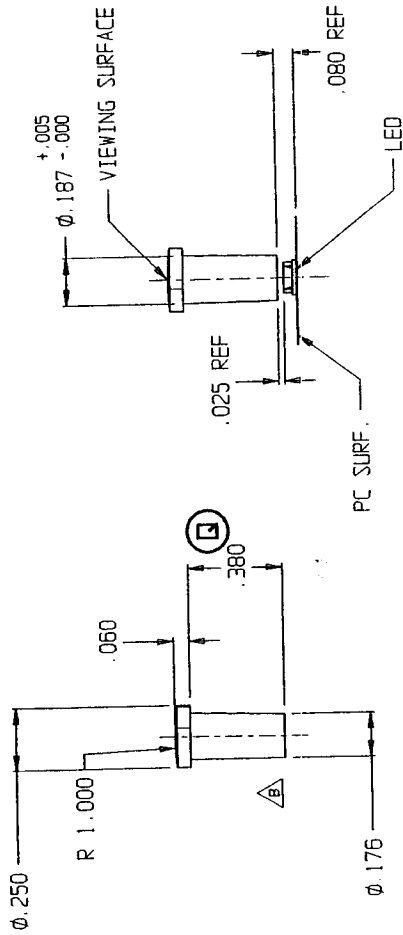


| REV | ECR NO./DESCRIPTION | DATE |
|-----|-----------------------------------|---------|
| A | 14794 NEW RELEASE | 7/7/97 |
| B | 14820 WAS Ø.160 HM | 7/14/97 |
| C | 14848 CHANGED TO SALES DWG. RM | 7/23/97 |



- NOTES:
1. LIGHTPIPE TO BE MOLDED IN A CLEAR 94-V0 POLYCARBIMATE.
 2. PART TO BE FREE OF BUBBLES AND BLACK SPECKS THAT MAY INHIBIT LIGHT OUTPUT WHEN VIEWED AT THE NORMAL VIEWING ANGLE.
 3. VIEWING SURFACE TO HAVE A #24 CHARMILLE FINISH
 4. LED SHOWN FOR REFERENCE

THIS DWG IS THE PROPERTY OF CHICAGO MINIATURE COMP. AND IS PROPRIETARY IN GENERAL AND IN DETAIL. IT SHALL NOT BE COPIED OR ITS CONTENTS REVEALED TO OUTSIDE PARTIES WITHOUT THE WRITTEN CONSENT OF CHICAGO MINIATURE COMP.

DO NOT SCALE

| | | | |
|---|------------|--|-------|
| <input type="checkbox"/> FOR INSPECTION USE ONLY <input checked="" type="checkbox"/> SPC DOCUMENTATION REQ. (X R CHARTS) | | TITLE VERTICAL LIGHTPIPE | |
| PART NO. | 7511A53 | CHECKED | NS |
| MATERIAL | SEE NOTE | ENG. APPROV | NS |
| FINISH | NOTED | SCALE | 2 : 1 |
| TOLERANCE UNLESS OTHERWISE SPECIFIED: | | DRAWN H. MARINO | |
| INCHES | .XXX ±.010 | CHICAGO MINIATURE LAMP INC. 147 CENTRAL AVE. HACKENSACK, NJ 07601 | |
| ANGLE | ± 1 deg. | REV | |
| | | C | |

OCT 10 2000

B13679

SHEET -

CHICAGO MINIATURE LAMP INC.